



OFFERS OVER

£225,000

Moncur Court
Kilwinning, KA13 6US

PROPERTY SUMMARY

*****CLOSING DATE WEDNESDAY 25TH FEB AT 12PM***** Located within a sought-after, rarely available, cul de sac situated on the periphery of town and beautiful Ayrshire countryside, is this spacious, well-maintained, modern, four-bedroom, detached villa. Offering bright and spacious family accommodation, fully enclosed, Southwest facing gardens, and an established, popular address, this lovely home is sure to be popular.

The well-appointed accommodation comprises; reception hallway, two-piece cloaks/wc, generous, front-facing lounge with under stairs storage, substantial dining size kitchen with newly fitted French doors leading to rear patio, throughout both the lounge and kitchen is an attractive solid wood floor, utility room with rear access via a newly fitted back door and access to integral garage.

On the upper level are four well-proportioned bedrooms all of which benefit from fitted storage, the master bedroom has the luxury of its own en-suite shower room. The first-floor accommodation is completed by a modern three-piece family bathroom with over-bath shower.

4



2



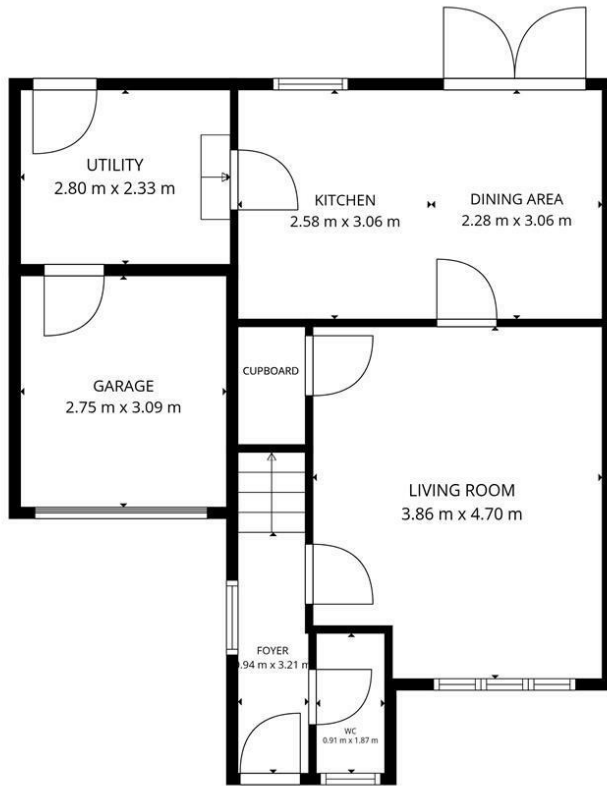
2



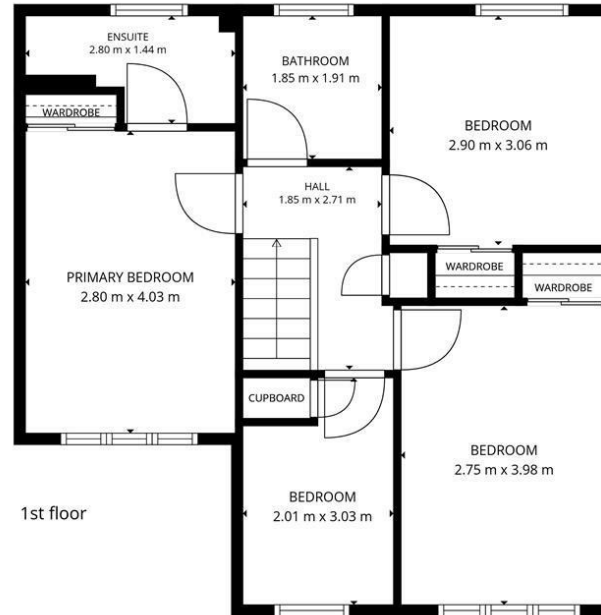








Ground floor



1st floor

Total GLA: 102 m² | Total: 120 m²
 Ground floor: 43 m² (Excluded areas 18 m²)
 1st floor: 59 m²

FLOOR PLAN CREATED BY CUBICASA APP. MEASUREMENTS DEEMED HIGHLY RELIABLE BUT NOT GUARANTEED.

LOCAL AUTHORITY

North Ayrshire

TENURE

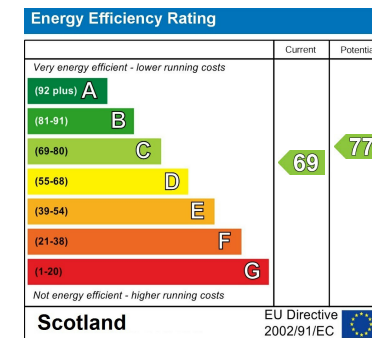
Freehold

COUNCIL TAX BAND

E

VIEWINGS

By prior appointment only



Agents Note: Whilst every care has been taken to prepare these particulars, they are for guidance purposes only. All measurements are approximate and are for general guidance purposes only and whilst every care has been taken to ensure their accuracy, they should not be relied upon and potential buyers/tenants are advised to recheck the measurements



OFFICE ADDRESS
 9 Townhead Street
 Strathaven
 ML10 6AB

OFFICE DETAILS
 01357 510088
 judithmcgill@cruive-estateagents.co.uk